

Blue Gray Alliance 150th Battle of Shiloh March 29 to April 1, 2012

The 150th Battle of Shiloh is now just six short weeks away. To start with the event website is www.shiloh150.org. The registration link, latest registration numbers and other information can be found there. **Registration is going to close at midnight on March 12, 2012 so get your registrations in before then.** They can be made online or sent in by mail to the address listed on the webpage. I do ask that you get your registrations in soon to help us with the planning and wing assignments.

The event registration site opens Wednesday March 28th. Registration is in a former grocery store at the intersection of Hwy's 142 and 22. The address is 1150 Hwy 22, Shiloh Tennessee. Signs will direct you from registration to the camp entrance.

Anyone planning on bringing a horse or mule to Shiloh must have their Coggins paperwork up to date. The paperwork for Federal forces including mounted artillery, staff horses and wagons will need to be checked by the Division Cavalry Brigade headquarters when you arrive at the cavalry camp. **We will also need a copy of the Coggins document for headquarters so it is available if the state veterinarian requests it.** Anyone planning on modern camping with their horses will need to check in with DCB headquarters and provide the same documentation.

After checking in, you will be directed to the proper area in the Federal cavalry camp. Everyone should be prepared to unload and get their vehicle out of camp quickly to make room for other arrivals. The provosts will be asking you to move your vehicle if it has been in camp for an hour. The Blue Gray Alliance is very concerned about vehicles remaining in the camps. It is planning on moving them offsite if they are in the camps too long.

Space for cavalry camping out of their trailer will be located along the North edge of the US parking lot. Cavalry in this area will still need to check in with the Division Cavalry Brigade headquarters.

If you have a water trough that you can bring with please do. We expect to have two locations in our camp for watering the horses. The event staff will make sure the troughs are filled for us.

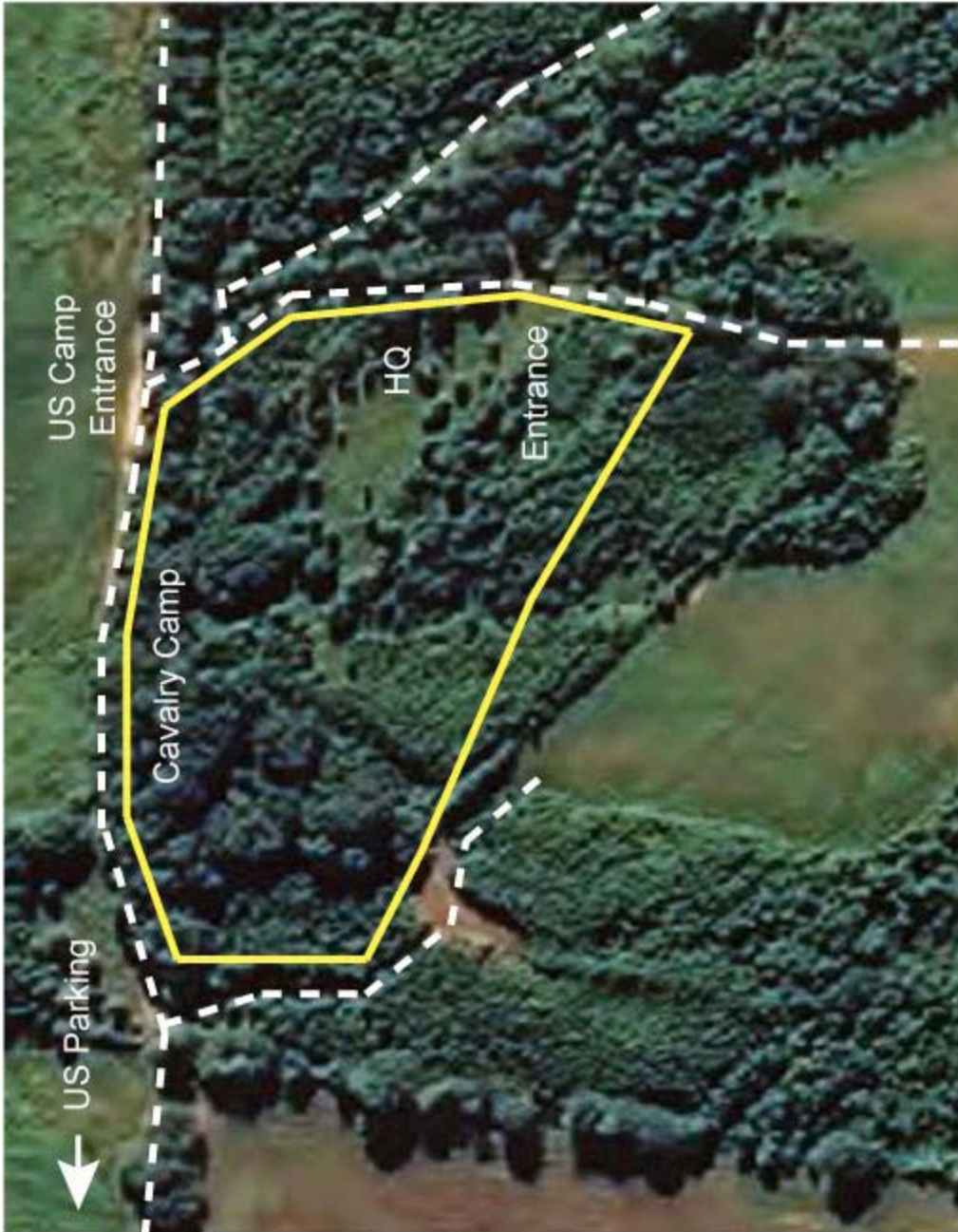
About half of our camp is under small trees. The open spaces were mowed during site visits last fall to take the small brush down. You should plan on bringing tools to make improvements to your camping area as needed for tents and picket lines.

Everyone should arrive either Wednesday or by noon Thursday. The event starts Thursday afternoon and we cannot have vehicles in our camp. Late arrivals may be able to get near our camp in order to walk their items in. The Federal camp will close to all vehicles at 9 PM on Friday.

Thursday afternoon the non spectator battles begin with the Federal Army marching to the original Fallen Timbers battlefield. Forces will camp on the battlefield Thursday night and be there for the Fallen Timbers battle the next morning. There are plenty of trees in our camping area so the cavalry should bring ropes with them for the horses. Everyone will return to the main camp Friday afternoon. Saturday morning the dawn Shiloh Church battle will take place. The Hornet's Nest and Peach Orchard battles will be in the afternoon. The counter attack battle will take place Sunday morning.

Our troops should expect the battles to be 2 hours long and have canteens and extra rounds with them.

By order of Colonel Orange, all mounted cavalry should be prepared to dismount and fight on foot. So everyone needs have a link strap and lead with them.



If you have any questions feel free to ask myself or any of the Division Cavalry Brigade staff.

Capt. Peter Yurkonis
Division Cavalry Brigade – Chief of Staff